



August 2009

ShelfLife



Know It All

Susan Ryan, from Materials Selection, wants everyone to know that we've added a trio of online subscriptions to our collection of databases that customers can access from home. We are now making available the Columbia Gazetteer of the World, the Encyclopedia Britannica Online Reference Center, and EB Online for Kids.

Columbia describes its database this way: "Gazetteers are simply assemblages of alphabetically ordered listings of places or physical/cultural features. More extensive gazetteers include brief descriptions along with the listings. The comprehensive gazetteer, however, is an encyclopedia of geographical places and features. The

Columbia Gazetteer of the World is such an encyclopedia."

Britannica features a video collection, timelines, and a "This Day in History" tidbit, along with many other useful features. Online for Kids, in addition to the material you expect from an encyclopedia, also offers instructions for preparing research papers, book reports, science reports, and oral reports.

These new databases are great sources of information for our customers—and for us, too.

Your Guide To What's Inside

Library Endowment
Trust & Lending
Library Review
page 2

Exec. Dir. Q & A
& Data Base
page 3

IT Report & Winning
T-shirt Design
page 4

Face Painting &
United Way &
ShelfLife Quiz
page 5

Emergency Help
page 6

Staff Profile,
Mystery Person
page 7

MLS Employees
page 8

Birthdays and Hire
Dates
pages 9 & 10





What We Do: The Library Endowment Trust

The Library Endowment Trust has been working to raise money for MLS since 1986.

Its 20-member Board of Trustees raises funds, volunteers for special events, and helps manage the Trust's funds. Development Director **Diane Sarantakos** and Development Specialist **Chris Carroll** assist the Board of Trustees with day-to-day operations and help coordinate the Library Endowment Trust's projects.

Since 2003, a team of LET volunteers has organized the Literary Voices™ dinner, bringing acclaimed authors like Dave Barry, Sue Grafton, and Ann Patchett to Oklahoma City for a fundraising dinner and free author events at the Downtown Library.

The Trust also directs an "Annual Funds" campaign to encourage contributions. Library customers, donors from around the country, and MLS employees have supported the LET by donating in honor and in memory of friends, family members, and co-workers.



Lending Library Review:

Getting Things Done When You Are Not In Charge



by Geoffrey M. Bellman

Written for support professionals, this book provides practical suggestions for initiating change. These suggestions are grounded in a model for change that supports the leadership efforts of managers, administrators, and supervisors who do not possess positional power. Bellman challenges support staff to take the lead in making contributions that benefit not only the organization but themselves.

Included also is a list of self-assessment questions for determining the role of work in one's life. The author places particular emphasis on the relationship between support professionals and their internal customers as a means of effecting change.

Time to be Licentious

Darlene Browers, from the Downtown Library, sent along a web address that MLS staffers might find handy. It's <http://www.dps.state.ok.us/renewal/> and if you sign up with the Department of Public Safety, they will send you an email notification 45 days before your driver's license is due for renewal. DPS no longer automatically mails out reminders and renewing the license can be a real pain if you let it lapse.



OKLAHOMA DEPARTMENT OF PUBLIC SAFETY



Executive Director Q & A

From Executive Director **Donna Morris**

Q: I saw in the 2nd July Ad Team meeting minutes that you are writing to mayors about Commission appointments. Just how are people selected by cities to sit on the Commission? Also, how are things looking for us as far as the new budget is concerned?

A: Commission member terms are 3 years in length and are to be staggered so that all members' terms do not expire the same year. Therefore, every year we have a number of commission members whose terms expire on July 31. This year six commission members' terms will expire on July 31—three are Oklahoma City appointees: Nancy Anthony, Lori Nelson and Brenda Palmer. The other three with expiring terms are Greg Womack, representing the City of Edmond; Lee Alan Leslie, representing Midwest City, and Ralph Bullard, the at large representative from Oklahoma County.

Library administration sends letters to the mayors of the municipalities in late May of each year if their representative's term is expiring and ask them to consider re-appointment of the commissioner if that person agrees to be re-appointed. The law requires these representatives to be appointed subject to the approval of the governing body of that city. In some cases, the commission member is ready to step down from the commission and if so, we ask that a new person be appointed. When requested by city officials, we often recommend people within that community whom we believe might be good board members.

The law is silent on criteria for these board members other than they are to represent the municipality which appoints them. Commission members can serve in expired terms until they are replaced or re-appointed.

To date, Lee Alan Leslie and Ralph Bullard have been re-appointed.

We are still waiting on final numbers from Oklahoma County regarding the budget for 09-10. We expect to have that information the first week in August. The finance committee meeting is scheduled for August 11th and the final budget will be presented at that time, unless the final figures are not available. This did occur last year, so we are keeping our fingers crossed that the numbers will be available on time.

We have been keeping a list of changes to the preliminary budget and those items will be added and/or deleted to the final budget. A list of those changes will be included in the finance committee packet.



Database Content

Did you know that we now have access to preparation for the GED in Spanish through our Learning Express Library database? Our customers can also practice for the CDL exam (Commercial Driver's License) by logging on to the same database.

In addition, they can take a look at The Learning Express Certified Medical Assistant Practice Exams for the Medical Assistant certification. This is the essential, authentic practice they need to perform their best on what has been called the "crucial professional exam." Each Certified Medical Assistant Practice Exam offers:

- A complete 200-question multiple-choice practice exam designed to familiarize students with the content, format, and timing of the AAMA's CMA (AAMA) Certification/Recertification exam
- Authentic practice with a computerized testing environment
- Instant online scoring and detailed answer explanations

Speaking of exams, take a few minutes to examine our online databases. Even you might be surprised at what we have to offer.



Reports Aplenty

Taking what we do for granted is easy. Too easy at times. When positive changes come along steadily we frequently don't stop to think about them. If we do, we think about them as individual accomplishments and not as part of an ongoing series of achievements.

To get a real sense of system-wide goals met, take a look at the 2009 Annual Information Technology Report. It's easy to find. Go to our webpage and look for "About the Library" on the left side. Open it and click on "Library Commission." Over the picture of Mick Cornett, click on "Agenda and Past Minutes." From there, choose June, 2009 and the annual IT report is included. **Jimmy Welch, Anne Fischer** and the **gang** have described a year's worth of good work for MLS.

You can also take a look at circulation gains and losses (just a few) and see where the greatest upsurge in usage has been. Did you know, for instance, that eMedia use, while still small, increased by nearly 120 percent?

You can check on computer use and system reserves, too.

The main thing to remember is that you don't have to wait for your manager/supervisor/colleagues to tell you how well MLS is doing in our community before you can spread the good word. The information you need is easy to find and understand.

Take a look. You know you do good work, but you may be surprised just how well it pays off.



GOOD JOB!



MLS Heart Walk T-Shirt Design Wing Prize

Hey, remember us telling you about the American Heart Association's 2009 Heart Walk a few months ago? Our t-shirt design came from MaC's own graphic designer **Rick George**, who won the Best Design Award from AHA. Good going, Rick.

The shirts were donated by IPGI for staff volunteers and family who participate in the walk. "Each year," said MLS Volunteer Coordinator **Heidi Port**, "we have a heart-related design, and each year the design has been amazing. The AHA has a t-shirt contest from the walk that is usually won by a company with several hundred walkers. This year, the Metropolitan Library Staff Volunteer shirt designed by Rick received the most votes and won the contest!"

MLS generated a total of \$4,170.75, and our top three fundraisers were Timothy Daubenspeck from BE, Fariba Williams from MC, and Terrie Thomas from BI. Total funds raised by the OKC Metro Heart Walk this year came to \$760,000.

Thanks to everyone who participated at any level, with a special shout-out to Rick.

GOOD JOB!





Face Painting with Tina Clark



These Summer at the Library Face Painting photos were taken at Wright Library on June 25. Below, Tina Clark, face painter, is shown with a customer at the library. Left are two younger participants.

Photos by Kelley Riha.



Ya Gotta Face It

Ever had the urge to check out the MLS page on Facebook? Did you know that MLS even had a presence on Facebook? We do, and if you want to take a look at it, our username is an easy one to remember: www.facebook.com/metro-library.

Stop by to see what's going on—and maybe you can make some suggestions for improvement.

ShelfLife Quiz: Once Upon a Time...

Are you caught up in Harry Potter fever? How much do you know about the classic fairy tales? Take this quiz and find out—and don't always rely on the Disney version.

1. A poor little girl dies with a smile on her face during a snow storm. Which story?
 - a. The Snow Maiden
 - b. The Little Match Girl
 - c. The Nutcracker
 - d. I dunno. Something by Dickens?
2. What is the literal meaning of the name "Rumpelstiltskin"?
 - a. Wrinkled little man
 - b. Crazy little man
 - c. Little rattle stilt
 - d. Little name stealer
3. In Collodi's original version of Pinocchio, what does the puppet do to get the talking cricket to shut up?
 - a. Hits him with a hammer
 - b. Crushes him with a shoe
 - c. Feeds him to a crow
 - d. Cuts him in half with a saw
4. The name Cinderella is actually a kinder version of what original title?
 - a. Cindermaid
 - b. Cinderwench
 - c. Cinderscrubber
 - d. Cinderstiltskin
5. What color was the apple that the evil stepmother gave to Snow White?
 - a. Green
 - b. White
 - c. Red
 - d. White and red

Answers: on page 8.



ShelfLife knows something you don't know, but just this one time we're not allowed to tell you what it is. Here are some hints: FOCUS, United Way, raffle, prize, trunk/tusks/African or Asian/eats 500 pounds a day. Some of these hints are slight exaggerations. Okay, some are outright lies.

But the truth is that the United Way Committee has outdone itself in coming up with a raffle prize for 2009. You will want to play the game, and you will want to win, so stay tuned for more information.

Oh, all right—just one more hint. Gestation period is 22 months.

Happy guessing.



How to Get Help When You Are Away from Home



Let's just get straight to the point: what do you do if you are on vacation in Mexico (or Kansas or Dallas) and break your ankle? Call Unum's "Worldwide emergency travel assistance" services. This exact scenario happened to me this summer on my last day of vacation in Mexico. I had just checked out of my

hotel and was bebopping along when, Whoops! I slipped and fell down about 5 stairs. Now honestly, my first thought wasn't Unum's "Worldwide emergency travel assistance" services. It was more like, "Yikes! Did anyone see that?". And then the dreaded thought came, "Yikes. No one saw it and now my foot is going the wrong way. What do I do?" Yell for help, hitch a ride on a Mexican ambulance and get checked into a Mexican hospital for the next 48 hours (a story in itself).

As I'm listening to the doctor, all I can understand is the word "surgeries"-plural. My instinct is to call Kelley Hoffman

in Benefits. She's the angel who gave me the number for Unum's "Worldwide emergency travel assistance" services. Once I called Unum and gave them my information, they took care of everything. They told me to 'Just Say No' to any major surgeries in Mexico, then they made arrangements for me to get back to the US. They took care of it all. All I had to do was call them and they did all the rest. For Free. Just for being a full-time benefits eligible MLS employee (it's part of our Group AD&D insurance program).

But even if you're not in Mexico when an accident happens, as long as you are a full-time benefits eligible MLS employee, you're covered. Even if you're just 100 miles or more away from home, you can count on getting help in the event of an emergency. Emergency travel assistance includes:

- *hospital admission guarantee (worked for me!)
- *emergency medical evacuation (worked for me!)
- *medically supervised transportation home (a doctor AND a nurse for me!)
- *transportation for a friend or family member to join hospitalized patient
- *prescription replacement assistance
- *care and transport home of untended minor children

Remember these numbers—or better yet, contact HUM for a travel assistance card you can stick in your wallet.

800-872-1414 (US)

+(US access code) 609-986-1234 (outside the US)

Reference number: 01-AA-UNM-7216

It worked for me! And the Learjet ride home was N-I-C-E!

-Kim Terry, MAC

The Whole Kitten Caboodle

Regina Fields, from Bethany Library, sends an SOS to cat-lovers. "I have five kittens that I need to find good homes for," she writes us. "They will be 8 weeks old and ready for new homes on August 6th."

Anyone interested in giving one or more of them a good home, please contact Regina at the Bethany Library, or email her at rkirkham@metrolibrary.org for more information.

The photo below is not an actual picture of the kittens.





Bulwer-Lytton Rides Again!

Every year, as a warning to MLS staff who want to be writers, SL presents the winner of the annual Bulwer-Lytton Award, which is "an international literary parody contest honoring the memory (if not the reputation) of Victorian novelist Edward George Earl Bulwer-Lytton (1803-1873). The goal of the contest is childishly simple: entrants are challenged to submit bad opening sentences to imaginary novels."

Here's this year's winner, from David McKenzie:

"Folks say that if you listen real close at the height of the full moon, when the wind is blowin' off Nantucket Sound from the nor' east and the dogs are howlin' for no earthly reason, you can hear the awful screams of the crew of the 'Ellie May,' a sturdy whaler Captained by John McTavish; for it was on just such a night when the rum was flowin' and, Davey Jones be damned, big John brought his men on deck for the first of several screaming contests."

Here are a few more winners and "Dishonorable Mentions":

"In a flurry of flame and fur, fangs and wicker, thus ended the world's first and only hot air baboon ride." -Tony Alfieri

"Melinda woke up suddenly to the sound of her trailer being pounded with wind and hail, and she couldn't help thinking that if she had only put her prized hog up for adoption last May, none of this would be happening, no one would have gotten hurt, and she wouldn't be left with only nine toes, or be living in a mobile home park in Nebraska with a second-rate trapeze artist named Fred."

-Ada Marie Finkel

"There were earthquakes in this land, terrible tsunamis that swirled flooding torrents of water throughout, and constant near-blizzard conditions, and not for the first time, Horatio Jones wished he did not live inside a snow globe." -Rich Buley-Neumar

And one you will never forget, no matter how hard you try:

"Using her flint knife to gut the two amphibians, Kreega the Neanderthal woman created the first pair of open-toad sandals."

-Greg Homer

Check them all out here: <http://www.bulwer-lytton.com/2009.htm>



• MYSTERY PERSON •

Here are the clues to this month's mystery person.

Fave Music: Classic 70s & 80s rock, SKA, Radio Margaritaville
Fave Sports: Watching football & basketball
Fave Vacation(s): Bonaire or Grand Cayman
Fave Movie: *Confessions of a Shopaholic*
Fave Food: Ted's Café Escondido
Fave TV Show: *NCIS, Law & Order, Lost, The Mentalist, The Bachelor(ette), Heroes, Big Brother...* (I watch way too much tv)
Fave Season: Spring, Winter, Fall and some early Summer
Fave Hobby: Scuba diving, working in the yard, reading and obviously, watching TV
Family: 2 kitties

What profession would you be in if you were not working in the library? Actress or writer

Is there something you want to do or accomplish before you die? Go skydiving and dive the Great Barrier Reef or Truk/Palau.

Answer on page 8.



STAFF PROFILE

Fingerprints

Jill Vessels, is not your ordinary MLS library worker, let alone cataloging worker. Jill says her hobby is endless amounts of TV watching and for family she says, "I was born a ferral stray, but now I am alpha female of my own wolf pack."

Anyone who knows Jill, will not be surprised to know why she likes working in cataloging, she says, "I know all my work mates' bad habits and can use this against them at any time." We are expecting a retort from her co-workers!

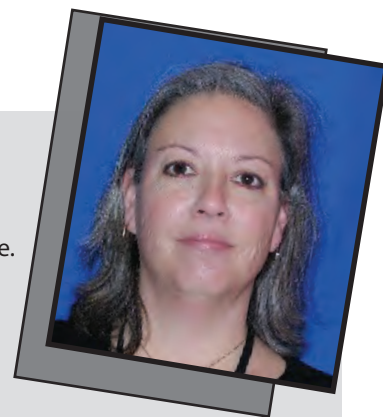
She says the latest movie she saw was "Bruno", and said it was a whimsical farce.

Jill said she had a skill in high school playing "first chair on the Triangle", and another skill is that she is prepared for the Zombie Appocalypse. Who'd have guessed?

As for a dream vacation? She wants to sail around the world in a two-man fishing boat... (with life vests, of course.) She didn't say if anyone would accompany her!

Jill named coming in second place in a kissing contest, and spelling better than a fifth grader, her accomplishments.

Thanks Jill, for a hilarious profile.





HELLO TO

Alicia McKinney	Page, ED
Carl Tibbets	Page, ED
Chris Sanz	Page, MC
Alex Gates	Circ Clerk, WA
Melody Neary	Page, CT
Diane Sarantakos	Dir. of Dev., DVS
Sara Outhier	Page, ED
Kelley Cheek	Page, ED
Ashley Maxwell	Page, DN
Abby McGee	Page, BE
Breck McGough	Page, ED
Michelle Merriman (rehire)	Tech Proc., TP
Cindy Martin (rehire)	Page, VI

GOODBYE TO

Queita Harvey	Page, SO
Deb Lukowski	Page, ED
Kaylah McNeal	Page, MC
Kerry Hubbs	Mtc. Tech. II, MTC
Carol Overton	Page, ED
Thuy Farrell	Assoc. Librarian, LO
Carol Cook	Page, VI
Kendra Williams	Page, DC
Matilde Olivera	Circ Clerk, WA

TRANSFER

Dawn Gehling	From Page, DN to BE
Molly Allen	From Youth Asst., OUT, to Page, MC

SYMPATHY

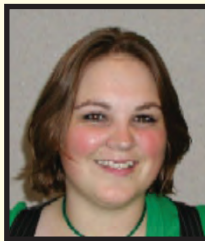
To Lawana Morgan, RE, whose sister Bridgett Thomas passed away July 6.



MARKETPLACE

Storage bench for sale.

Contact David Calhoun, BI, at 410-8519.



Alicia McKinney



Carl Tibbets



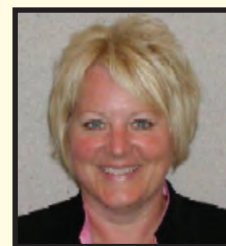
Chris Sanz



Alex Gates



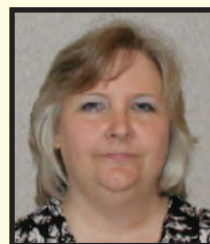
Melody Neary



Diane Sarantakos



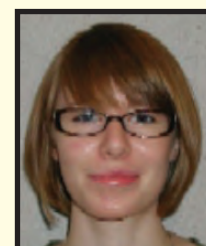
Sara Outhier



Kelley Cheek



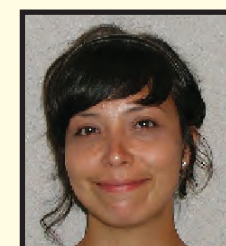
Ashley Maxwell



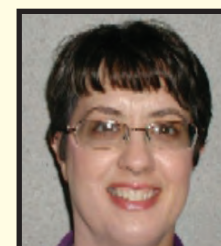
Abby McGee



Breck McGough



Michelle Merriman



Cindy Martin


MYSTERY PERSON IS:

Kim Terry
Dir. of Mkt.
& Comm.

Answers to ShelfLife Quiz


1 = b; 2 = c (It's a kind of goblin.); 3 = a; 4 = b; 5 = d (You can look it up.)

August Bulletin Board



August Birthdays

BARBARA A. JOHNSON	8/1	LINDA J. JAMESON	8/14
LYNDA G. TONEY BAHR	8/1	JOE HARLEY SHELTON	8/15
CHRISTOPHER KENNEDY	8/2	SUSIE L. BEASLEY	8/18
DEBORAH AUSTIN-MUNDEN	8/2	DOUGLAS P. BROWN	8/20
BRENDA STOCKTON-HISS	8/3	GARY W. CROUCH	8/20
CAROL L. PROVINE	8/3	VAN R. BIELSTEIN	8/21
JAMES E. NIMMO, JR	8/3	BRANDON M. ROSE	8/22
LANDON D. HOLMAN	8/3	CRYSTAL DAWN ROPER	8/22
CHESTER KINZIE, JR	8/4	JEAN M. WILBURN	8/22
DAGMAR M. PEERY	8/4	NICHOLAS R. THOMPSON	8/22
JILL L. VESSELS	8/4	JESSICA Y. LITTLE	8/23
JONATHAN I. TOLLE	8/4	EVELYN CAROL GILBERT	8/24
SHARON A. NOLAN	8/5	BRENNAN MICHAEL CARLAW	8/25
KATRINA B. PRINCE	8/6	KARMEN QUEITA HARVEY	8/25
RICK SAMUEL GEORGE	8/6	LINDA LEE HYAMS	8/25
ANNA N. TODD	8/7	THUY THI MAI FARRELL	8/25
KELLY M. DALRYMPLE	8/7	BRITTANY MARIE BARBER	8/27
REGINA M. WOLFINGER	8/7	ANN G. ALIOTTA	8/28
KATHY L. FRITSCH	8/8	VIVIAN A. STEVENSON	8/28
ANGELA L. HILL	8/9	ELIZABETH WILSON	8/29
JOSHUA H. GERNER	8/9	JAMAR O'NEIL RAHMING	8/29
JOYCE MCCAULEY-JOHNSON	8/9	KIMBERLY P. GREEN	8/29
LENA MUNIR KHADER	8/9	LOIS F. CROSS	8/29
LINDA A. ELSTON	8/9	TERESA GOGGINS	8/29
JONITA NORMORE	8/10	TIMOTHY D. FISHER	8/29
JAMES B. GORDON	8/12	JOYCE A. HELMS	8/30
ANITA F. ROESLER	8/13	WENDY J. GABRIELSON	8/30
ERICA Y. RUTLAND	8/13	BETH K. STEELMAN	8/31
FRANCIE L. PENDLETON	8/13	BRENDA ANN HAMMONS	8/31
LAURA MCMURTRY	8/13	JONATHAN E. WILLIS JR	8/31
SYLVIA A. LAWSON	8/13	KAY L. BAUMAN	8/31



Employee's August Date-of-Hire

PRISCILLA M. DOSS	8/1/1972
CHERYL E. PERNELL	8/1/1979
PHILLIP E. TOLBERT	8/9/1982
SHARON L. MAINE	8/17/1982
BARBARA K. BEASLEY	8/1/1984
SHARON A. NOLAN	8/29/1989
KARMEN QUEITA HARVEY	8/21/1991
KELLY M. DALRYMPLE	8/26/1991
GALEN R KURTH	8/30/1993
JULIA ANN BALLO U	8/30/1993
KAREN L. LITTERAL	8/31/1996
KATHLEEN M. LAUGERMAN	8/4/1997
GLENN E. WEBB JR	8/25/1997
JANET E. BOWEN	8/25/1999
STEPHANIE D. GERLING	8/14/2000
SAISRI MCCORMICK	8/21/2000
DAVID L. CALHOUN	8/1/2001
KIM L. COBB	8/9/2001
JOHN D. WOOD	8/27/2001
FANNIE M. HARSHBARGER	8/10/2002
SHARON DAVIS JORSKI	8/10/2002
GERALD W. HICKMAN	8/10/2002
BARBARA A. JOHNSON	8/19/2002
NGOC KIM NGUYEN	8/3/2004
KEVIN D. COLWELL	8/30/2004
BARBARA M. PARR	8/1/2005
ANGELA L. HILL	8/2/2005
TERRIE LUCILLE THOMAS	8/8/2005
VIVIAN A. STEVENSON	8/15/2005
ELIZABETH LEANN WILSON	8/14/2006
STORMY DAWN LEE	8/28/2006
JOE HARLEY SHELTON	8/1/2007
LINDSAY JONES EGLE	8/7/2007
STANLEY A. TAUCER	8/13/2007
ERIKA M. SALINAS	8/13/2007
JAIME LYNNE HACKWORTH	8/27/2007
STEPHEN CATER SHENOLD	8/27/2007
CLAUDIA WEBER WAGNER	8/29/2007
TRAVIS REID HOWELL	8/29/2007
VANESSA ANN SPAETH	8/12/2008
CARSEN KENNETH MOON	8/27/2008

September Bulletin Board

September Birthdays

MARY L. STRASNER	9/1
TERESA R. MATTHEWS	9/1
DANIELLE D. WALKER	9/2
KIM ELLEN MACARTY	9/2
AJAX S. C. DELVECKI	9/3
EKS WYE POLLOCK IV	9/3
RIKKI D. MARTIN	9/5
DARRIE J. BREATHWIT	9/6
PERRY A. WILSON	9/6
BURTON D. THURMOND	9/9
DIANE SARANTAKOS	9/9
TULIN R. LAFOLLETTE	9/10
LANNY B. MYERS	9/11
ABIGAIL ANNE MCGEE	9/12
PRISCILLA M. DOSS	9/12
CANDACE MCDANIEL	9/13
CHERYL E. PERNELL	9/14
KERBIE M. ADDIS	9/14
TRAVIS REID HOWELL	9/14
VINCENT D. ARMIJO	9/14
RUBY J. SOUTIERE	9/15
RICHARD H. MULLINS	9/16
KIMBERLY L. WADE	9/17
ANGELA M. PAELTZ	9/19
DONNA C. CANFIELD	9/19
ROSEMARY G. RYDEN	9/19
GERALDINE E. ADAMS	9/21
SHIRLEY ANN WOLF	9/21
LIANA C. MICH	9/22
ASHLEY JADE MAXWELL	9/24
LISA LEA HEINRICH	9/25
TINDLE J. ARNOLD	9/26
DEBRA K. JACKSON	9/27
KAREN R. BRAY	9/27
KAREN L. MARRIOTT	9/28
VANESSA ANN SPAETH	9/28
DAVID WILLIAM FRENCH	9/30

Employee's September Date-of-Hire

KAREN L. MARRIOTT	9/6/1977	BURTON D. THURMOND	9/16/2003
SUSIE L. BEASLEY	9/18/1978	TERESA R. MATTHEWS	9/29/2003
FAYE HORN	9/10/1979	MARY ANN JOHNSON	9/13/2004
JO NITA WHITE	9/25/1981	AJAX S. C. DELVECKI	9/17/2004
ROSEMARY A. CZARSKI	9/13/1982	C. GEORGE NIEBANK, III	9/27/2004
ALMA LOUISE BROWN	9/16/1982	EMILY K. GREEN	9/19/2005
KAY L. BAUMAN	9/27/1982	CHRISTOPHER CADE	9/11/2006
RUTH M. BUTLER	9/17/1984	PENELOPE GREER BIRD	9/11/2006
PAMELA S. BUCHANAN	9/10/1985	NICOLE DAWN CHANEY	9/26/2006
SUSAN E. RYAN	9/13/1989	BRITTANY BARBER	9/28/2006
SHIRLEY J. HENDERSON	9/3/1991	DONNA C. CANFIELD	9/10/2007
CHESTER KINZIE, JR	9/6/1994	KYNDALL OVERSTREET	9/11/2007
JANA C. HAUSBURG	9/11/1995	CAROL L. ROBERTS	9/24/2007
DEBBIE E. ROBERTUS	9/11/1995	ROBIN C. SAGEL	9/9/2008
ANN L. MEEKS	9/11/1995	JENNIFER IRENE JONES	9/9/2008
CRYSTAL L. SUPPES	9/25/1995	KIMBERLY P. GREEN	9/10/2008
JOYCE A. HELMS	9/24/1996	LYNDSIE RAE DOYLE	9/11/2008
MARY E. TAYLOR	9/16/1999	DARIN RAY SMITH	9/17/2008
LINDA M. WILLIAMS	9/7/2000	KRISTIN LYNN HILL	9/22/2008
D. DIANE SHARP	9/17/2001	CINDY J. FRAZIER	9/23/2008
ELIZABETH M. NEWLAND	9/10/2002	MYRA DAWN DOVER	9/25/2008
THOMAS P. GALLAGHER	9/16/2002		
MATTHEW E. EVANS	9/17/2002		
VAN R. BIELSTEIN	9/17/2002		
STUART H. WILLIAMSON	9/19/2002		
EMILY R. WILLIAMS	9/2/2003		