



ShelfLife

Staff Newsletter of the Metropolitan Library System

January 2007

Focus Groups Contribute New Information & Understanding

MLS set up discussions with five focus groups recently with the ultimate goal of establishing a new vision for the library system. Three of the groups were made up of library staff, and the other two were composed of Commission members.

MLS hired a professional facilitator to oversee the discussions and told **Kay Bauman**, MLS Deputy Executive Director/Library Operations, the outcome.

Kay Bauman, along with Planning Dept. Researcher **Stuart Williamson** and the facilitator, developed the questions, and Stuart took charge of and organized the sessions. A court reporter was hired to come in and transcribe the discussions verbatim. Now that these have been summarized, Kay's office is looking for the best way to share the information with the entire staff.

"We are also currently researching what the governmental and business communities and their leaders say about Oklahoma County's future so we can look at ways MLS can help," Kay said.

Kay and her team have also drawn some information from the customer satisfaction surveys MLS has conducted over the last five years, as well as examining international studies which have shown that MLS and other library systems share many similarities across the board. Kay was exposed to some challenging concepts when she attended a "Planning for Results" boot camp in Tennessee last November.

"We are in the process of modifying the Service Responses in the current plan," she added. "Our goal is to create a new vision, and an inspiring new direction. The MLS mission is well known, but our vision is not. Once the vision is established, we can move along to develop new goals.



Ten commissioners took part in the focus groups, and Kay was very pleased with their knowledge and understanding of library philosophy and opera-

tions. They talked about visiting with their constituents to find out what their communities want and need from us.

"I was invigorated by reading the transcripts of all the focus group discussions. The process is quite thought-provoking. I like that."

Please click [here](#) to go to the Focus Group Summary.

In this issue:

Focus GroupsPage 1
Update on ConstructionPage 2
Info MagazinePage 2
DN Library CaféPage 3

Tip of the Hat to PlanningPage 3
Library Page PoemPage 4
Read About It PartyPage 4

Test from 1895/Traffic TestPage 5
PeoplePage 6
B-Days & Pin DatesPage 7



Hardhats Required: An Update From the Construction Guy

We spoke with **Todd Olberding**, MLS Director of Construction Management, to find out what's happening with our three major, current construction projects.

MLS Service Center

"We closed on a site for the Service Center in late June," Todd said, "and now we're in the process of hiring an architect. On Dec. 12 and 14, we ran an ad in the *Daily Oklahoman* inviting area architects to submit Statements of Qualification. We're hoping for a good response. All Statements of Qualifications (SOQs) are due by January 4th."

The Service Center Selection Committee will read through the responses and reduce the number to a short list of three to five firms. They will then be requested to provide more information and to set up meetings with them.

"If nothing slows down the process," Todd added, "we should be able to present a recommendation to the Commission on its March 15 meeting."

The project has a construction budget of 3.2 million dollars so Todd is expecting that there will be a lot of interest in working with us on this project.



Northwest Library

Progress on the new Northwest Library is steady but slow.

"Donna (Morris, Executive Director) has recently sent a letter regretfully declining the land that Francis Tuttle offered us as being unsuitable for our needs," Todd said.

"The NW Site Selection Committee has created a list of four possible sites and the city of Oklahoma City is in the process of estimating the value of each one. The bond issue that passed and let us work on this provides finite funds. The more money we spend on land, the less we'll have to spend on a building.

"The city can't commit money it doesn't have yet to the job, nor can MLS buy land on the promise from the city that it will repay us because the city can't make that promise. Everyone is hoping that funds will be available in July."

Ralph Ellison Library

As for the renovations at the Ralph Ellison Library, 16 Statements of Qualification have been received and a short list is in place. OKC & MLS are working to create the "short list" of design firms which will be interviewed shortly.

We'll keep you up-to-date on changes in status of all three projects.

Some *info* for Us

By now you may have seen the January issue of MLS' new magazine, *info*. We've combined the monthly calendar with some of the most popular features of the *Metro Library* magazine and spruced it up a bit by changing the design. Please take a look at it whenever you have a few minutes and let Marketing and Communica-

tions know what you think of it. Send us the good news along with the bad. All insults accepted as compliments, but we prefer useful suggestions and constructive criticism.



No fooling, let us know what you think of *info* by sending comments to **Kim Terry** or any of the MaC staff. Let us know what you'd like to see in future issues.



Soup's On!

Downtown Library Café News

It won't be long now until the café on the first floor, northeast corner of the RJN Downtown Library will open for business.

On Dec. 14, the Library Commission approved a letter of intent to allow The Catering Co. (which bought out Sellers not long ago) to move into the space with a soup and sandwich shop patterned along the lines of the one The Catering Co. operates in the History Museum near the capitol.



"The shop will be clean and simple," said MLS Deputy Executive Director/Finance Lloyd Lovely, who has been working on this project for several months.

"It'll be bright, with tables and chairs and a bar along the wall like the

one in the Friends Event Room on the 4th floor of DN."

The facility should seat between 25 and 30 customers at a time, and overflow customers can take their food to eat in the Atrium.

Although Lloyd doesn't look for the café to open before March 1, the space will be cleaned up in time to provide a venue for two music acts on Opening Night.

The food will be simple since no grill will be installed. The only hot fare will consist of things that can be cooked elsewhere and warmed up on the spot.

Lloyd is certain that pricing will be competitive with other sandwich shops in the downtown area.

An MLS Tip of the Hat: To Planning

Those guys in Planning Services are winning awards again.

Planning Services Specialist **Kellie Bradford** and the Titan of Training, Employment Development Coordinator **Stacy Schrank** have taken two of the three awards in the Non-Interactive Training category from the Central Oklahoma Chapter of the national American Society for Training and Development.

"The Award of Excellence," Stacy explained, "is the top ranking ASTD recognizes. Kellie and I sent in our Summer Reading training package and the new Computer Use Sign-Up training package.

"Our chapter of ASTD received 11 entries, but we won two of the top three awards. Next time you're in the Downtown

Library, stop by Planning to take a look at Kellie's and Stacy's plaques. They are deservedly proud of them.

And be sure to let ShelfLife know when you or your colleagues are recognized for outstanding achievement. We can't brag on you if we don't know what's going on.





A Day in the Life of a Library Page

Last month, ShelfLife profiled MLS pages and in response **Carol Hunter**, ED librarian, wrote this poem about that library's 25 pages. We thought you'd enjoy taking a look at it.

"A Day in the Life of a Library Page"
by Carol Hunter

Stretch, Stoop,
Squat, Crawl
Lift, Push,
Tug, Sprawl

At Front, In Back,
Over, Around,
Below, Above,
Now, on the ground.

Glue, Tape,
Sort, Slide,
Send, Receive,
Set up, Tear down;
Shelve, Serve,
Seek, Find,
Smile, Nod
Another round...
Procure, Please,

Produce, Provide,
Amazing Fetes
And, yes, Survive!

Stamina of an athlete,
Grace of a dancer,
Flexibility of an acrobat,
Expertise of a fencer.

In all these tasks, you excel.
You serve us, and serve us well.

It's 'Read About It' Party Time

Every year about this time, MLS Television Programming Coordinator **BJ Williams** throws a "Thank-You" party for library staff who volunteer some of their time to appear on the system's weekly TV show, "Read About It." Staff who come on the show to discuss books, CDs and DVDs kick back with food and drink, and compare stories of their time on TV.

Once again this year, the party was held at the home of M.J. Van Deventer, Director of Publications for the Cowboy and Western Heritage Hall of Fame, and regular interviewer on the show. After the lunch broke up, volunteers paid a trip to Barnes & Noble to pick out gift books, the 'Read About It' way of adding the exclamation point to the "Thank you!"

If you're interested in joining the "Read About It" volunteer corps, e-mail B.J. or Doug Bentin.



'Read About It' volunteers and staff from left to right: Kelley Riha, Doug Bentin, BJ Williams, Jim Nimmo, Anita Roesler, Darlene Browers, Kim Edwards, Glenda Carlisle, Elizabeth Kessler, M. J. Van Deventer, Heidi Port, Julie Ballou, Joyce McCauley-Johnson, Leslie Jones (makeup artist) and Heidi Johnson. (Courtesy of Claude Long, photographer.)



And You Thought You Had it Tough... Test From 1895

Well, many of us have kids, or siblings, or spouses who are out of school for their winter breaks. Personally, I'm reveling in not having to assist with homework for a few weeks.

For everyone who thinks that today's classes must be more difficult than they used to be because there is so much more now to remember, here is just half of an eighth grade final exam from a Kansas school in 1895. You'll never again look down on an old-timer who says s/he had only a junior high education.

The original test is on file at the Smokey Valley Genealogical Society and Library in Salina, KS, and was reprinted by the Salina Journal. If you'd like a copy of the whole test (without answers) e-mail Doug Bentin. Note that this is only half the test and therefore should have taken between 150-180 minutes to complete.

Okay, now close your books. No cheating. Begin.

8th Grade Final Exam: Salina, KS, 1895

Grammar

1. Give nine rules for the use of capital letters.
2. Name the parts of speech and define those that have no modifications.
3. Define verse, stanza and paragraph
4. What are the principal parts of a verb? Give principal parts of "lie," "play," and "run."
5. What is punctuation? Give rules for principal marks of punctuation.

Arithmetic

1. A wagon box is 2 ft. deep, 10 feet long, and 3 ft. wide. How many bushels of wheat will it hold?
2. District No. 33 has a valuation of \$35,000. What is the necessary levy to carry on a school seven months at \$50 per month, and have \$104 for incidentals?

3. What is the cost of 40 boards 12 inches wide and 16 ft. long at \$20 per metre?
4. Find bank discount on \$300 for 90 days (no grace) at 10 percent.
5. What is the cost of a square farm at \$15 per acre, the distance of which is 640 rods?

U.S. History

1. Give the epochs into which U.S. History is divided.
2. Relate the causes and results of the Revolutionary War.
3. Describe three of the most prominent battles of the Rebellion.
4. Who were the following: Morse, Whitney, Fulton, Bell, Lincoln, Penn, and Howe?
5. Name events connected with the following dates: 1607, 1620, 1800, 1849, 1865.

Orthography

1. What is meant by the following: Alphabet, phonetic, orthography, etymology, syllabication?
2. What are elementary sounds? How classified?
3. Give two uses of silent letters in spelling. Illustrate each.
4. Mark diacritically and divide into syllables the following, and name the sign that indicates the sound: card, ball, mercy, sir, odd, cell, rise, blood, fare, last.
5. Write 10 words frequently mispronounced and indicate pronunciation by use of diacritical marks and by syllabication.

Geography

1. What is climate? Upon what does climate depend?
2. Describe the mountains of North America.
3. Name and describe the following: Monrovia, Odessa, Denver, Manitoba, Hecla, Yukon, St. Helena, Juan Fernandez, Aspinwall and Orinoco.
4. Name all the republics of Europe and give the capital of each.
5. Describe the process by which the water of the ocean returns to the sources of rivers.

Another Test

In the previous column, we reprinted part of an eighth grade graduation exam from 1895. That was for the smart people among us. Here are some questions for the rest of us. These are from the California Department of Transportation's traffic school exam. Take a look at these actual answers given by some of the students.

Q: Do you yield when a blind pedestrian is crossing the road?

A: *What for? He can't see my license plate?*

Q: Who has the right of way when four cars approach a four-way stop at the same time?

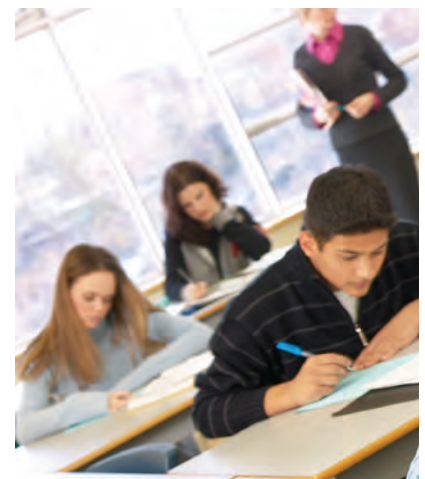
A: *The pick up truck with the gun rack and the bumper sticker that says "Guns don't kill people. I do."*

Q: How can you reduce the possibility of having an accident?

A: *Be too drunk to find my keys.*

Q: What is the difference between a flashing red traffic light and a flashing yellow traffic light?

A: *The color.*



Q: How do you deal with heavy traffic?

A: *Heavy psychedelics.*

People

HELLO TO

| | |
|-------------------------|----------------------|
| Dominique Nero | Page, RE |
| Dianne Carson | Page, CT |
| Elise Barger | Page, CT |
| Nate Nugent | Page, CT |
| Reneé Launey | Page, WA |
| Justin Magdellini | Page, BI |
| Nick Pittman | Security Officer, DN |
| Minoo Dolatabadi | Page, ED |
| Michael Guard | Page, ED |
| Joshua Lewis | Circ Clerk, CT |
| Alice Maddox | Page, DN |
| Veronica Moran | Page, BE |

TRANSFER

| | |
|--------------------------|---------------|
| Richard Antonisse | From RE to MC |
| Cheryl Coleman | From WA to RE |
| Kelly Dalrymple | From RE to WA |
| Edward Marand | From ED to RE |
| Sharon May | From MC to RE |
| Lawana Morgan | From DN to RE |
| Cheryl Pernell | From RE to DC |
| Sharon Thompson | From RE to DN |
| Samuel Weehunt | From DC to RE |
| Kristin Williamson | From RE to ED |

GOODBYE TO

| | |
|-----------------------|--------------------------|
| Pamela Brandt | Project Specialist, LO |
| Matthew Pickle | Page, WA |
| Jessica Michael | Page, ED |
| Reagan Bockhold | Materials Sel. Tech, MSL |
| Reni Creek | Page, WA |

SYMPATHY

To **Mary Strasner**, DN, whose mother, Katherine Johnson passed away Dec. 3.

Sympathy also to **Sylvia Lawson**, whose father William Brantley, passed away Dec. 14.

And sad news from Warr Acres, former staff member **Pamela Wiser**, passed away Dec. 10.



Dominique Nero



Dianne Carson



Elise Barger



Nate Nugent



Reneé Launey



Justin Magdellini



Nick Pittman



Minoo Dolatabadi



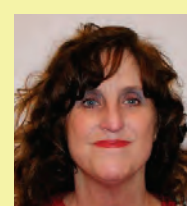
Michael Guard



Joshua Lewis



Alice Maddox



Veronica Moran

CONGRATULATIONS

To **Pauline Rodriguez**, CAT, who married Parker Atkins Nov. 11. Parker works in cataloging at Oklahoma City University library. The couple spent two weeks in Hawaii after the wedding. Pauline says, "So, for anyone who thinks cataloging isn't romantic, I'm living proof that it is!"

RETIREMENT

Marcia Findeiss, librarian at Choctaw Library, retired Dec. 8.

January Birthdays

Employee's Date-of-Hire for January

February Birthdays

LAURIE F. MACK-CLARK 1/2
FRANCES K. SAMARIPA 1/3
RANDY E. WAYLAND 1/4
URSULA A. WARD 1/5
BRADLEY S. MCCOY 1/5
RENA M. GIBSON 1/6
SALLY K. PHILLIPS 1/7
DENISE A. LUKES 1/7
CAROL MOODY 1/8
CECIL L. PEADEN 1/9
LI WANG 1/10
PAT WHISENHUNT 1/10
PETER L. ROBERSON 1/12
RICH ANTONISSE 1/14
JONATHAN ST.AUBIN 1/14
STEVEN B. JENKINS 1/14
MARCIA J. FINDEISS 1/14
TODD S. OLBERDING 1/18
BEVERLY K. PHILLIPS 1/18
RONNA C. DAVIS 1/19
JOE J. POE 1/19
HELEN J. SHELTON 1/19
GLENN E. WEBB JR 1/19
EVELYN K. DAVIS 1/20
JOHN LEROY HILBERT 1/21
DANA M. PHILLIPS 1/21
NICOLE E. BURESH 1/21
JESSICA ANN PRIEBE 1/21
KATHY S. MARQUIS 1/22
NGOC KIM NGUYEN 1/24
JOAN G. KENDALL 1/26
SUSAN M. MONROE 1/30
CHESTER L. LOVELY 1/31

CAROL PROVINE 1/6/1975
KATRINA B. PRINCE 1/6/1985
NANCY J. LYTLE 1/22/1985
ELIZABETH HOLSHOUSER 1/21/1987
SYLVIA A. LAWSON 1/24/1989
ERIC G. KING 1/9/1990
JAMES E. NIMMO, JR 1/18/1993
LOVINIA M. NICHOLS 1/5/1994
GREGORY W. BENNETT 1/21/1997
DENISE A. LUKES 1/5/1998
TIMOTHY D. FISHER 1/26/1998
BUDDY G. JOHNSON 1/26/1998
LISA L. WALKER 1/26/1998
VICTORIA E. DIXON 1/26/1998
KATHY L. FRITSCH 1/27/1998
CHRISTINE R. BASSETT 1/25/1999
BOBBIE KAY BREWER 1/11/2001
TIMOTHY D. HANNA 1/16/2001
JENNIFER ADKISSON 1/7/2002
SHARON G. BISH 1/7/2002
LAURA MCMURTRY 1/23/2002
LAQUETA L. LEWIS 1/29/2002
KELLEY E. HOFFMAN 1/21/2003
CHESTER L. LOVELY 1/12/2004
RYAN BLAINE TAYLOR 1/20/2004
PATRICK D. WILLIAMS 1/20/2004
SHARON JANE TAYLOR 1/27/2004
KIM ELLEN MACARTY 1/1/2005
SAMUEL G. WEEHUNT 1/3/2005
BETH K. STEELMAN 1/18/2005
CASEY JO BEACH 1/31/2005
DEBORAH FAITH LEAL 1/31/2005
JONATHAN E. WILLIS JR. 1/4/2006
JONITA NORMORE 1/4/2006
REAGAN D. BOCKHOLD 1/4/2006
continued in next column

FRANK C. RAY 2/1
ANDREW KEEPERS-PHILLIPS 2/2
MELISSA S. O'NEIL 2/2
JOANNE SCHNEIDER 2/3
MARY J. PATTON 2/4
LEE MATA 2/6
KAREN L. LITTERAL 2/9
ANN L. MEEKS 2/9
CATHERINE A. WADE 2/10
DEVON D. MCDANIEL 2/10
CHARLA RENE AUCONE 2/15
ROSA ELVIRA CANTU 2/16
ERIC G. KING 2/18
CAROL S. HUNTER 2/18
ATHENA JEAN PARKER 2/18
KATHLEEN M. LAUGERMAN 2/20
DEBORAH J. WILLIS 2/20
HOLLIE A. HIRE 2/20
DANIEL E. FIELDS 2/20
SHANTEL RENA LOVE 2/21
GENE E. CHAPPELL 2/22
JULIANNA LOUISE LINK 2/23
LARRY G. JOHNSON 2/24
ERNESTINE F. CLARK 2/28

Employee's Date-of-Hire for January Continued

LYNDA G. TONEY BAHR 1/4/2006
JESSICA LEIGH MICHAEL 1/6/2006
ELIZABETH SCHROEDER 1/30/2006
LIANA C. MICH 1/30/2006
MARIA LUISA REYES 1/30/2006
MARK DANIEL VANCE 1/30/2006
JOHN ELLIS-ETCHISON 1/30/2006
ANNA N. TODD 1/31/2006

Employee's Date-of-Hire for February

RIC REA 2/16/1982
DENESA C. YOST 2/28/1986
LINDA J. JAMESON 2/26/1990
SARAH J. KELLUM 2/14/1994
SUSAN M. MONROE 2/12/1996
DARLENE S. BROWERS 2/12/1996
ROY S. BALLOU 2/8/1999
GEORGE M. MARSHALL 2/15/1999

SHAHIN S. ASGHARI 2/16/1999
SUSAN K. BECKETT 2/7/2000
TERI L. REDENBAUGH 2/16/2001
KATHRYN M. DUNN 2/19/2001
CAROL S. HUNTER 2/19/2001
JANA L. EATMON 2/18/2002
CHERYLL R. SMITH 2/3/2003
GLORIA J. TURNER 2/2/2004

TAMERAT ATLABACHEW 2/2/2004
CHRISTOPHER CARROLL 2/17/2004
LAWANA MORGAN 2/23/2004
JAMES B. GORDON 2/2/2005
ANDREW KEEPERS-PHILLIPS 2/14/2005
JESSICA HEITMAN 2/6/2006
RHONDA J. TURLEY 2/13/2006
LINDSAY E. JONES 2/27/2006