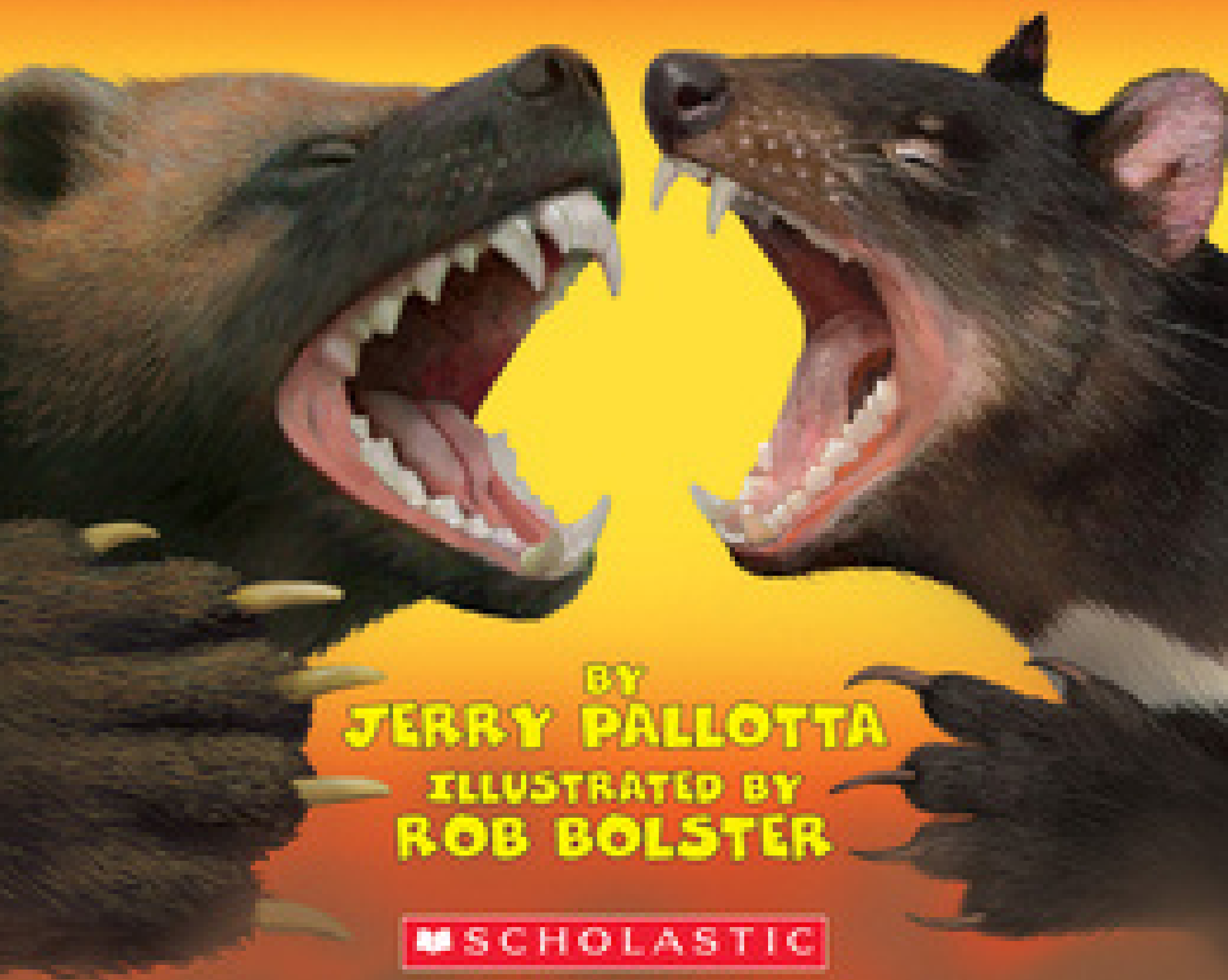


— WHO — **WOULD WIN?**

**WOLVERINE
VS.
TASMANIAN DEVIL**



BY
JERRY PALLOTTA
ILLUSTRATED BY
ROB BOLSTER

SCHOLASTIC

SCIENTIFIC NAME OF WOLVERINE: "Gulo gulo"

Meet the wolverine. Its scientific name means "glutton." A glutton is someone who eats a lot.

DEFINITION

A mammal is a warm-blooded animal with fur that gives milk to its young.



NICKNAMES

Skunk Bear, Nasty Cat, Carcajou, Quick Hatch, Gulon, and Mountain Cat.

Wolverines are mammals. A wolverine is not a small wolf. It is in the weasel class of animals. A wolverine grows to be about three feet long, and weigh up to 40 pounds.

96

SCIENTIFIC NAME OF TASMANIAN DEVIL: "Sarcophilus harrisii"

Meet the Tasmanian devil. Its scientific name means "flesh lover."

DEFINITION

A marsupial is a mammal that carries its young in a pouch.



NICKNAMES

The Taz, the Butcher, Bear Devil.

A Tasmanian devil is a type of mammal called a marsupial. It grows to be two and a half feet long and weigh up to 25 pounds.

97

TEETH

Here is the skull of a wolverine. No one wants to get bitten by a wolverine. Look at the back teeth—they are perfect for crushing bones.

AMAZING FACT

These animals live on different continents but their skulls are incredibly similar.



Canine teeth are also called cuspids, eye teeth, and dog teeth.

DID YOU KNOW?

A carnassial tooth is shaped for cutting and scraping meat.

FUN FACT

Few people have ever kept an adult wolverine for a pet.

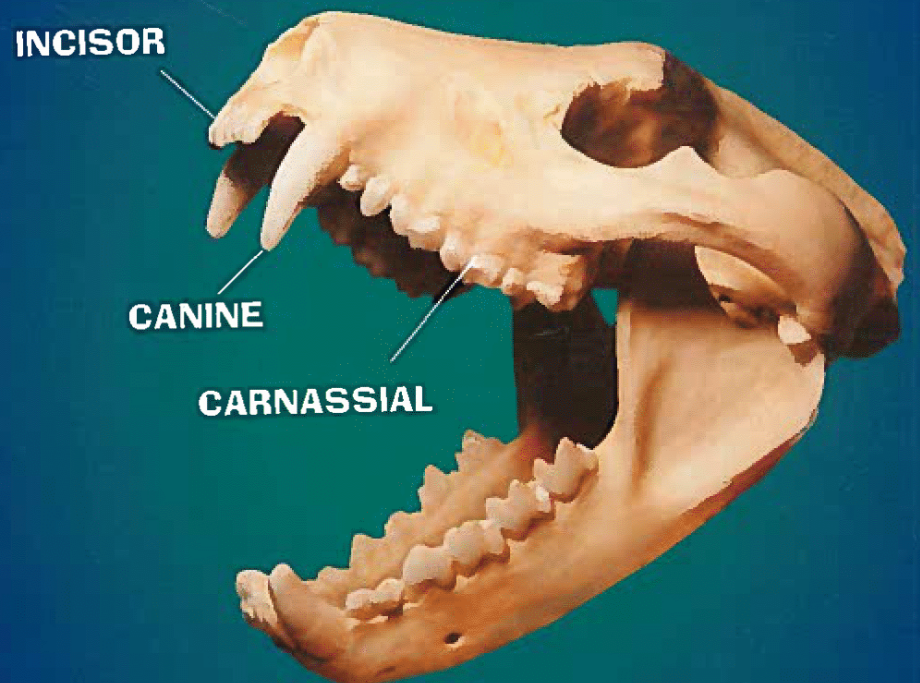
104

JAWS

Here is the skull of a Tasmanian devil. When they bite, they don't like to let go.

DENTAL FACT

Humans have no carnassials.



Look at its jaws and teeth. My, what big incisors you have! It is a carnivore.

DEFINITION

A carnivore is a meat eater.

105

BITE

If the wolverine and a great white shark were the same size, the wolverine would have a stronger jaw.



Great White Shark

FUN FACT
Great white shark teeth are not positioned tightly. They wiggle.

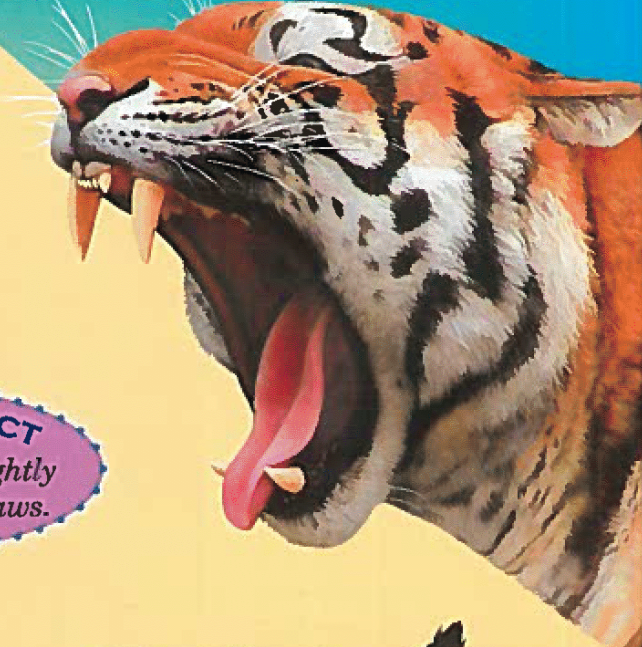


Wolverine

DID YOU KNOW?
Scientists measure jaw strength by "bite force."

STRENGTH

If the Tasmanian devil and a tiger were the same size, the Tasmanian devil would have a stronger bite.



Tiger

AMAZING FACT
Tiger jaws are slightly larger than lion jaws.



Tasmanian Devil

DID YOU KNOW?
The Tasmanian devil has the greatest bite-force ratio of any animal.

CLAWS

A wolverine has impressive claws. It has no problem digging dens, making snow caves, or shredding logs.

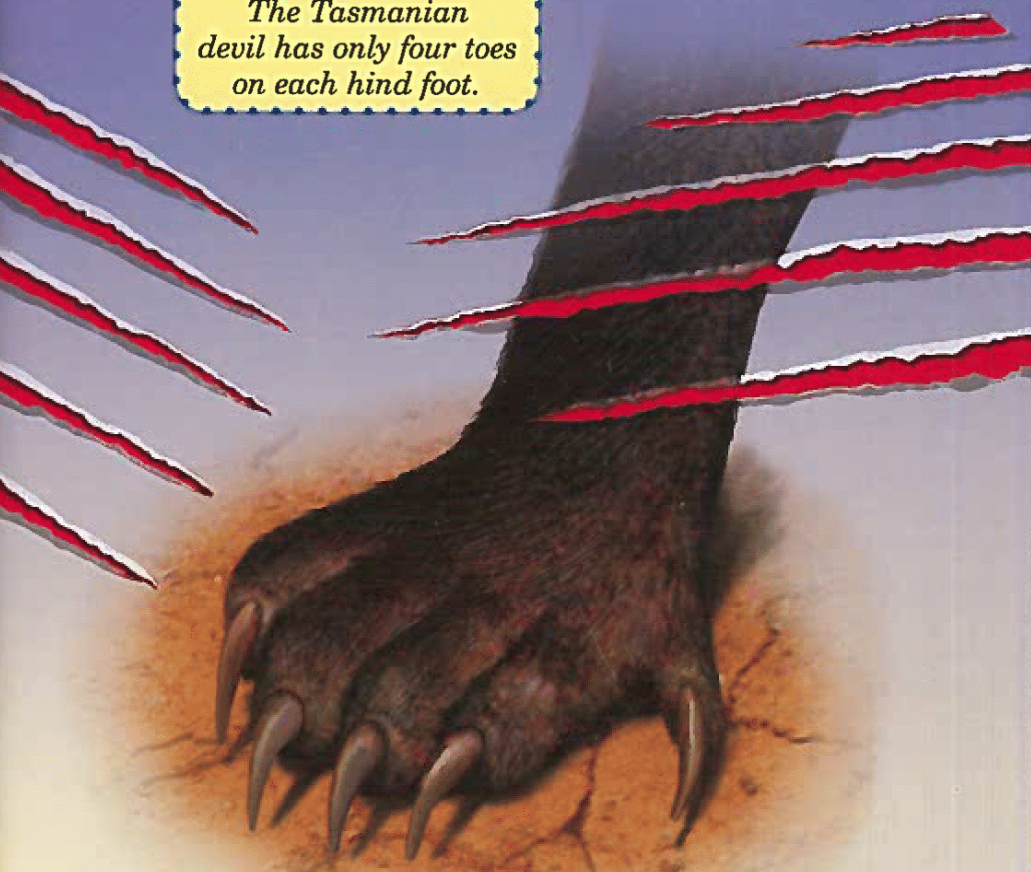


FACT
Even large animals know that a wolverine has deadly claws.

CLAWS

The Tasmanian devil also has long claws that are great for digging. Four claws point forward and one claw points to the side like a thumb. They can pick food up.

DID YOU KNOW?
The Tasmanian devil has only four toes on each hind foot.

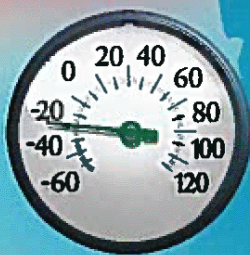


FUN FACT
A Tasmanian devil's hind legs are shorter than its front legs.

WOLVERINE LEGENDS

BRRR!

In sub-zero weather, a wolverine has no problem climbing up a steep icy mountain.



When tagged by scientists, wolverines were found to be able to hike 80 miles over hilly terrain in one day.



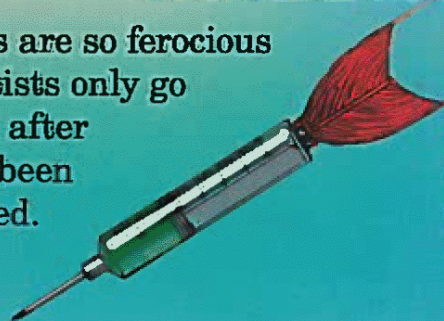
QUESTION?

How long would it take to drive 80 miles if you were traveling at 40 miles per hour?

ANSWER
2 hours.

ONE WOLVERINE CAN MAKE A PACK OF WOLVES RUN AWAY.

Wolverines are so ferocious that scientists only go near them after they have been tranquilized.



DEFINITION

Tranquilized means drugged by medicine. Zoologists and park rangers shoot drugs instead of bullets to make an animal sleep for a while.

TASMANIAN DEVIL LORE

Their scream has been described as horrifying.



FUR

In North America, wolverines are a threatened species. Humans have slowly been moving into their territory, and wolverines need a lot of space. Wolverine have been hunted by fur trappers for hundreds of years. They have warm, beautiful fur.

The fur looks like this:



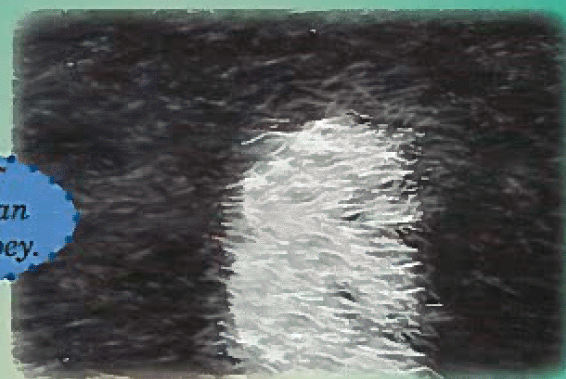
DID YOU KNOW?

Wolverine fur was used for the lining in parkas.

FUR

Tasmanian devils are also an endangered species. There is no commercial market for Tasmanian devil fur. But Tasmanian devils were hunted for years because they killed animals that fur trappers wanted. They were considered pests.

The fur looks like this:



CUTE FACT

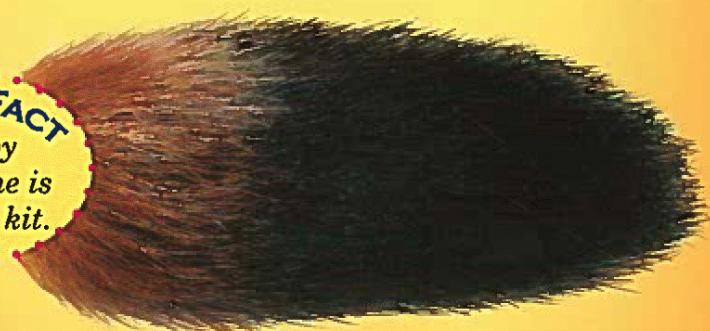
A baby Tasmanian devil is called a joey.

The Australian government paid people to kill Tasmanian devils. In 1930, the bounty for a dead Tasmanian devil was 25 cents.

TAIL

CUTE FACT

A baby wolverine is called a kit.



The tail of a wolverine is soft and fluffy. It does not protect it in a fight, but keeps it warm in sub-zero weather.

TAIL

DEFINITION

A bounty is money paid for capturing or killing an animal.

FACT

Tasmanian devils have been protected since 1941.



The Tasmanian devil stores fat in its tail. A Tasmanian devil with a skinny tail is an unhealthy animal.

WHO HAS THE ADVANTAGE?

WOLVERINE

TASMANIAN
DEVIL

☐

Size

☐☐

Length

☐☐

**Jaw
Strength**

☐☐

Claws

☐☐

Fur

☐☐

Voice

☐