

For Your Safety

"Curbside Plus": Curbside Service + Computer Use Only



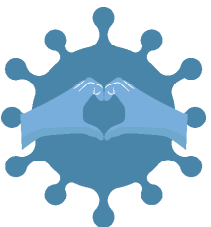
All returned materials will be held in quarantine for at least 96 hours before they are checked in. *Customers will be credited for the date on which they returned the materials.*



Holds can be picked up at the library's entrance or by Curbside Pickup.



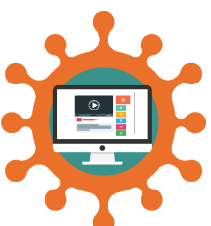
Computer use will be limited. Computers will be spaced to be socially distant.



Staff will wear gloves while handling materials and money.



Masks are required to enter any Metropolitan Library.



Online programming and activities will be available.

